

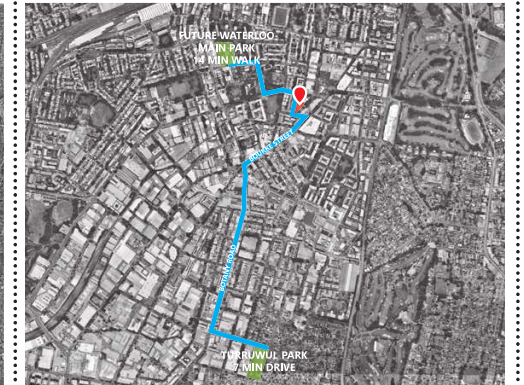
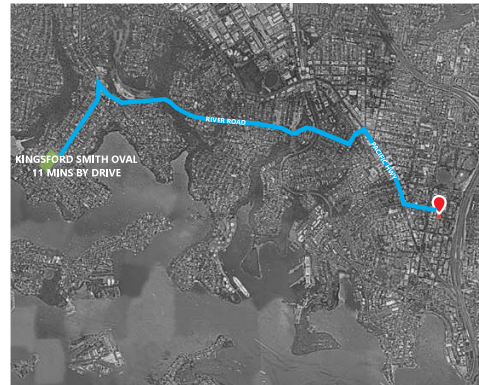
Attachment A2-4

Urban Design Report

06

PROGRAMMATIC OPERATIONS

VERTICAL SCHOOL PRECEDENTS - COMPARISON



INNER SYDNEY HIGH SCHOOL

- Y7 - Y12
- ~ 1200 STUDENTS
- ~5240 SQM OUTDOOR (4.4 SQM/ STUDENT)
- 1 MIN WALK TO PRINCE ALFRED PARK

ULTIMO PUBLIC SCHOOL

- K-Y6
- ~ 900 STUDENTS
- ~4500 SQM OUTDOOR (5 SQM/ STUDENT)
- 3 MIN WALK TO WENTWORTH PARK

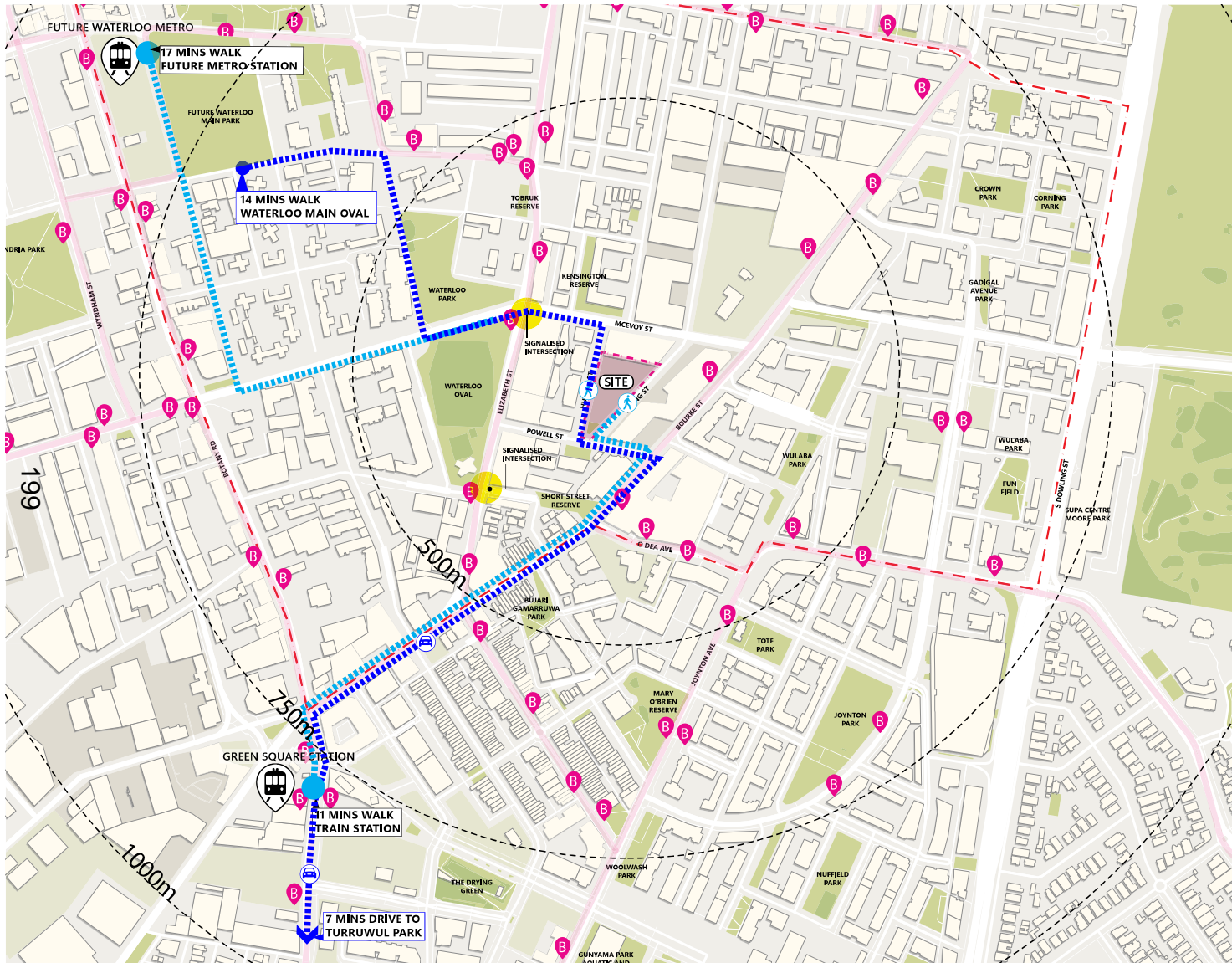
REDDAM HOUSE NORTH SYDNEY CAMPUS

- K-Y12
- ~ 1550 STUDENTS
- ~3410 SQM OUTDOOR (2.2 SQM/ STUDENT)
- 11 MIN WALK TO KINGSFORD SMITH OVAL

PROPOSED REFERENCE SCHEME

- K-Y12
- ~ 800 STUDENTS
- ~4975 SQM OUTDOOR (6.2 SQM/ STUDENT)
- 7 MIN DRIVE TO TURRUWUL PARK
14 MIN WALK TO FUTURE WATERLOO MAIN PARK

CONNECTIVITY TO LOCAL FACILITIES AND TRANSPORT



The school currently achieves 6.2sqm on-site open space per student. Regarding access to open space off-site, it is currently proposed that students will have access to Turruwul Park, which is a 7 minute drive from the school. This park includes a soccer field, two tennis courts, a tennis wall, and cricket facilities. Council has confirmed the space has availability Monday to Friday 8:00am-5:00pm.

Additionally, the future Waterloo Main Park provides two hectares of open space and include two playing fields. It is approximately 800m walk from the proposed school site and provides another option for potential shared use. If this could be achieved this option would be the preferred option given its proximity to the site.

Regarding connectivity to transport, the school is also well connected to Green Square (11min walk) as well as the future Waterloo Metro Station (17min walk).



FUTURE WATERLOO MAIN PARK



TURRUWUL PARK

SCHOOL SPACES BREAKDOWN

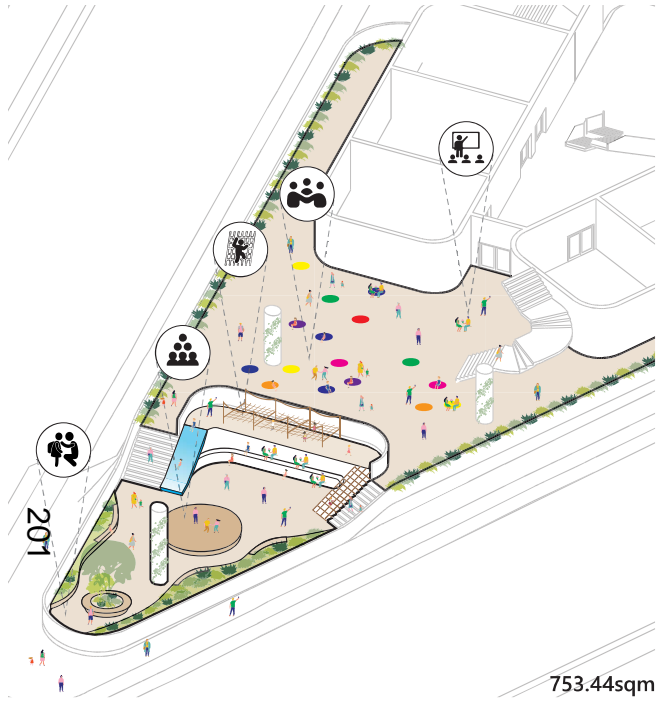
YEAR	STUDENTS	GLS	SPECIALIST	LIBRARY	SCHOOL GFA	OUTDOOR
K	40	2				
1	40	2				
2	40	2				
3	40	2	0			
4	40	2				
5	40	2				
6	40	2				
				870 SQM	870 SQM	8,000 SQM
7	90					
8	90					
9	90	31	13			
10	90					
11	80					
12	80					
TOTAL REQ.* <small>*AS PER SCHOOL OPERATION'S CONSULTANT'S ADVICE</small>	800	45	13	870 SQM	9,694 SQM	8,000 SQM (10 SQM PER STUDENT)
TOTAL PROV.		45	13	846 SQM	10,609 SQM	4,975 SQM (6.2 SQM PER STUDENT)

The reference scheme has been tailored to reflect the required spaces needed for a school of 800 students. The following table summarises the required spaces as well as what has been provided in the reference scheme.

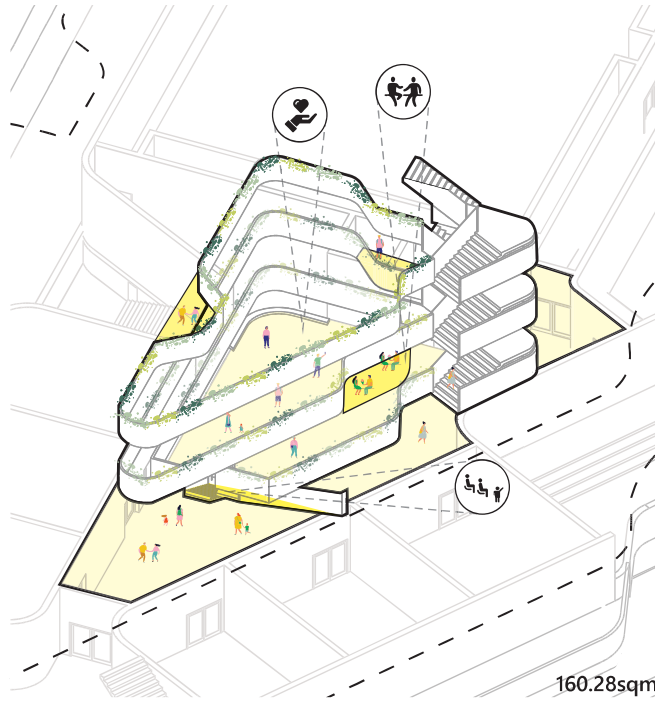
200

VARIETY OF OPEN SPACES

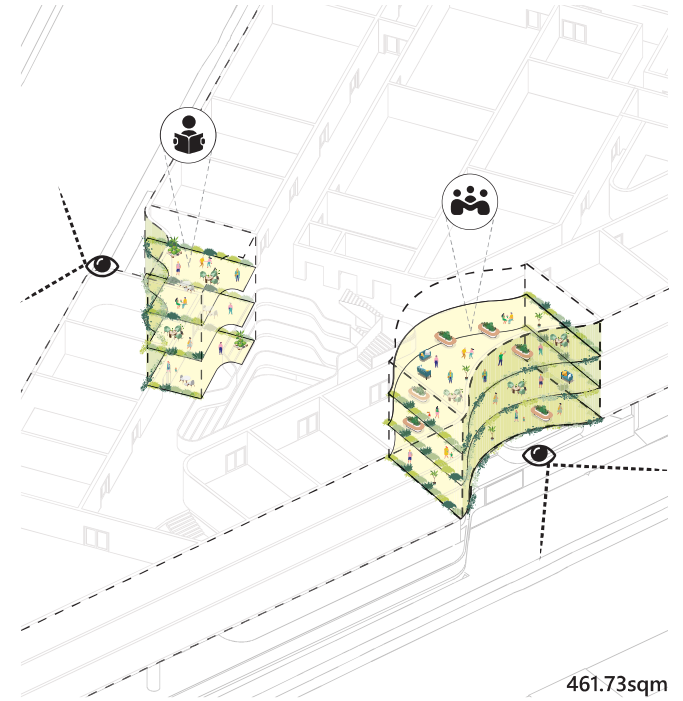
OPEN SPACE ON GROUND



SCHOOL ATRIUM



PASSIVE LEARNING SPACES



PRIMARY PLAY
ADAPTIVE SPACE
CONNECTION WITH COMMUNITY



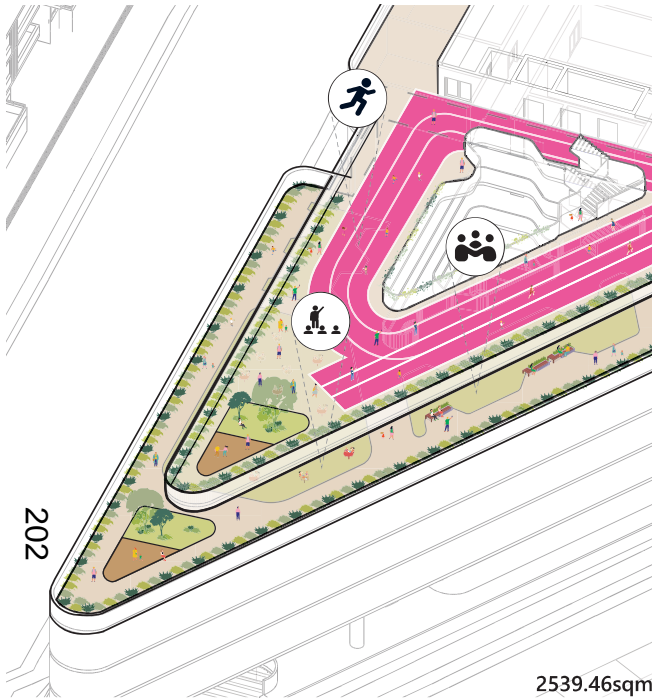
LEARNING AREA
COMMUNAL SPACE
BREAKOUT AREA



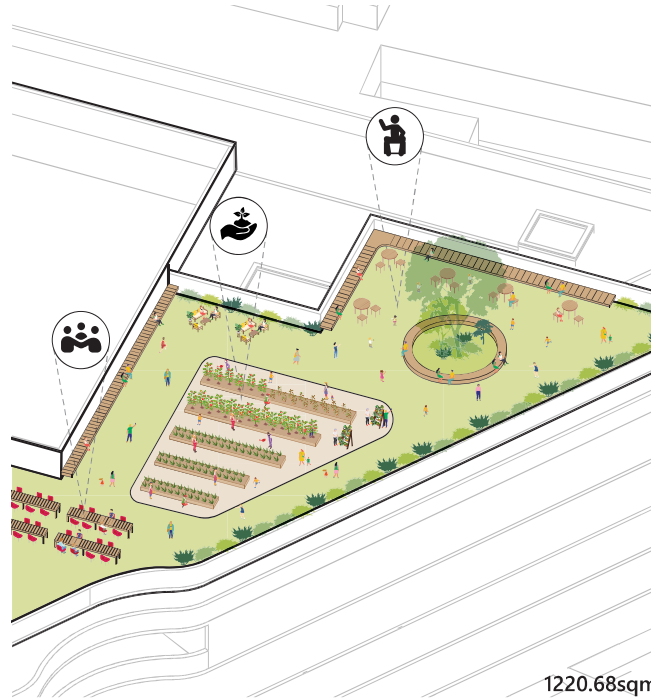
SECONDARY PLAY ZONE
OUTDOOR LEARNING
ADAPTIVE SPACE

VARIETY OF OPEN SPACES

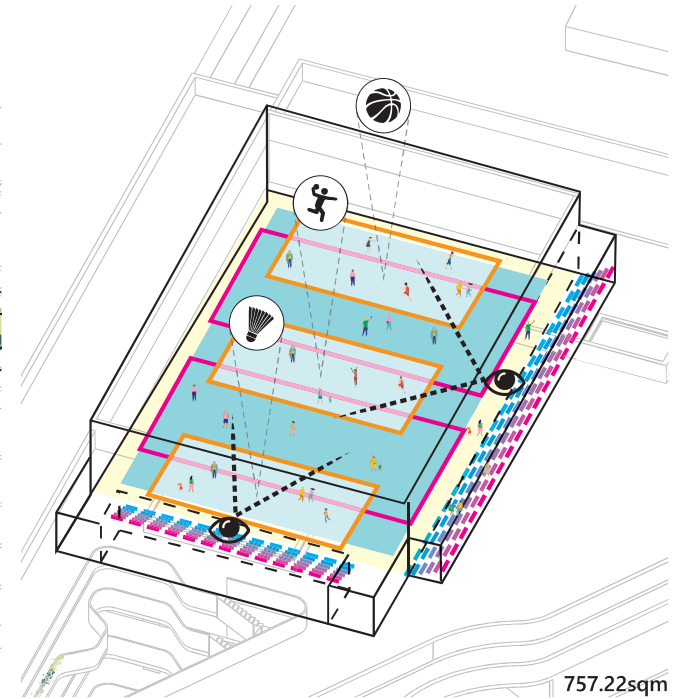
LEVEL 4-5 OPEN SPACE



ROOFTOP OPEN SPACE



ROOFTOP BASKETBALL COURT



OUTDOOR LEARNING
 OUTDOOR GYM
 CONNECTION WITH ENVIRONMENT



FOOD PRODUCTION
 OUTDOOR LEARNING
 COMMUNAL SPACE

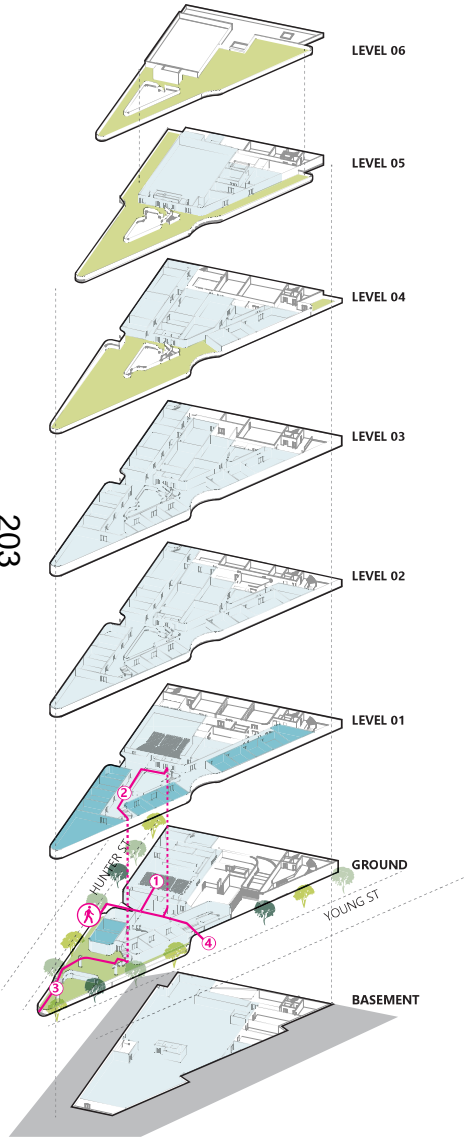


SPORT AREA
 HOSTING EVENTS
 ADAPTIVE SPACE

PROGRAMMATIC OPERATIONS
MIXED USE - MODES

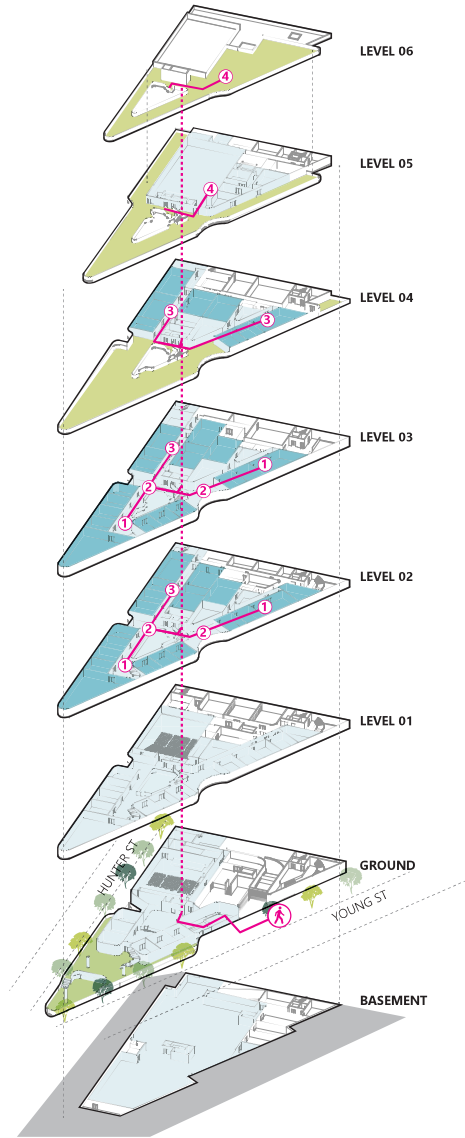
203

SCHOOL - PRIMARY
Weekday



1. In the morning, students go to the auditorium for morning assembly.
2. They then proceed to their classrooms where they engage in various subjects such as english, and mathematics.
3. In the afternoon, students move to the amphitheatre (open space on ground) for science class for collaborative learning.
4. At the end of the day, students wait at the pick-up zone on ground for pick up from their parents.

SCHOOL - SECONDARY
Weekday

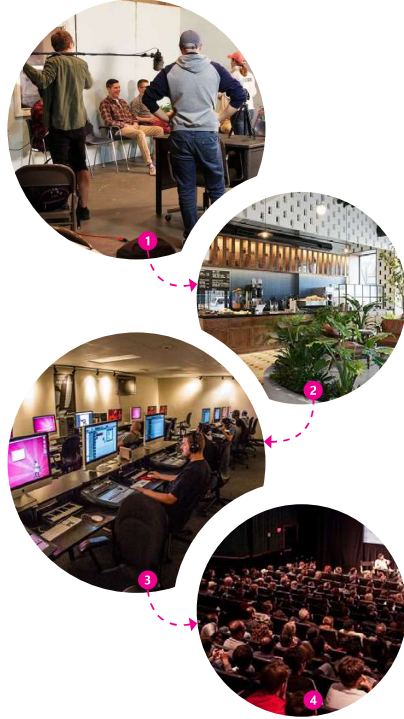
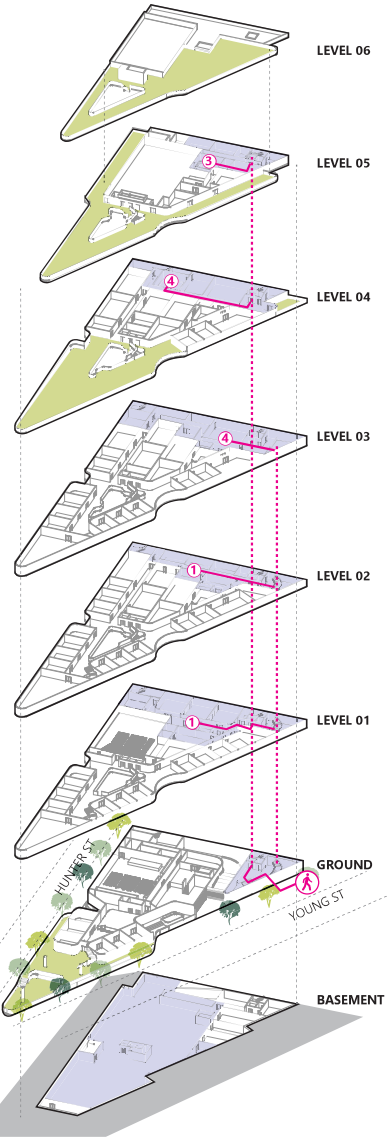


1. In the morning, students move to their classrooms after morning assembly for academic lessons.
2. During recess/lunch time, students go to the passive outdoor space or breakout space to hang out.
3. For creative/technologies class, students move to the specialist classrooms for design, woodworking, computer lessons.
4. During 'free period' for the senior students, some go to the sports court to play games. Others tend to the food production garden.

PROGRAMMATIC OPERATIONS
MIXED USE - MODES

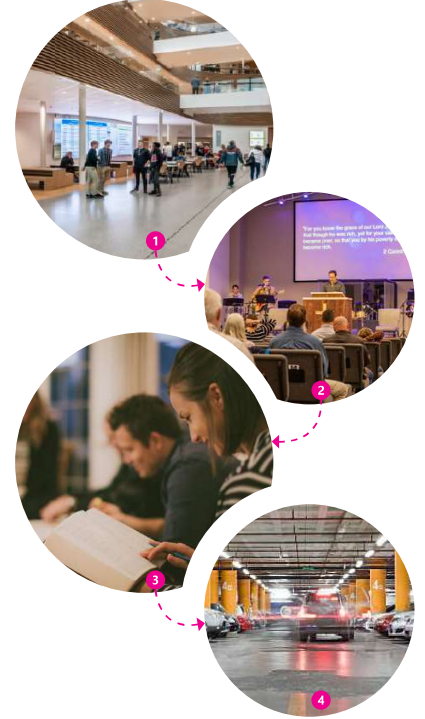
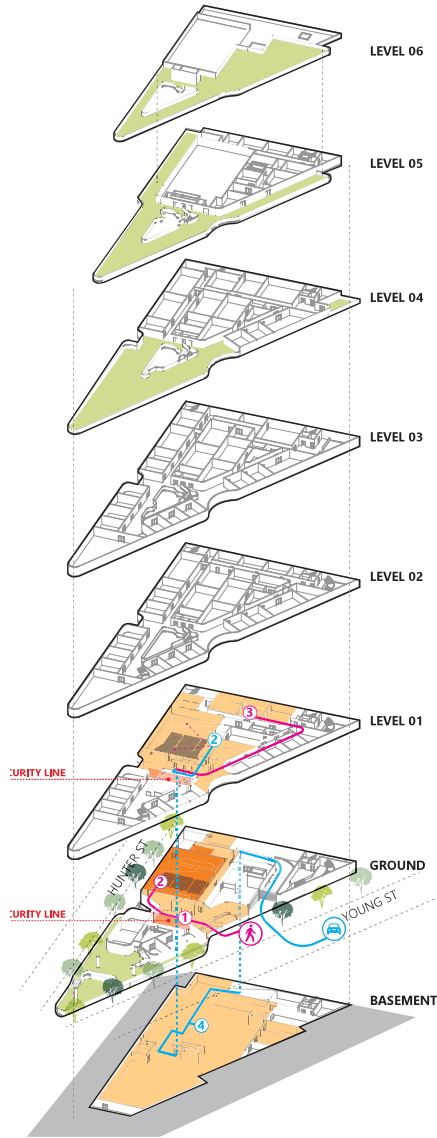
204

FILM SCHOOL
Weekday, weekend



1. Students start their day by attending lectures/workshops.
2. In the afternoon, students head to the cafe on ground for lunch.
3. In preparation for the film screening, students go to the sound and editing lab for final adjustments.
4. Students and guests attend the screening in the cinema to watch and enjoy the final film.

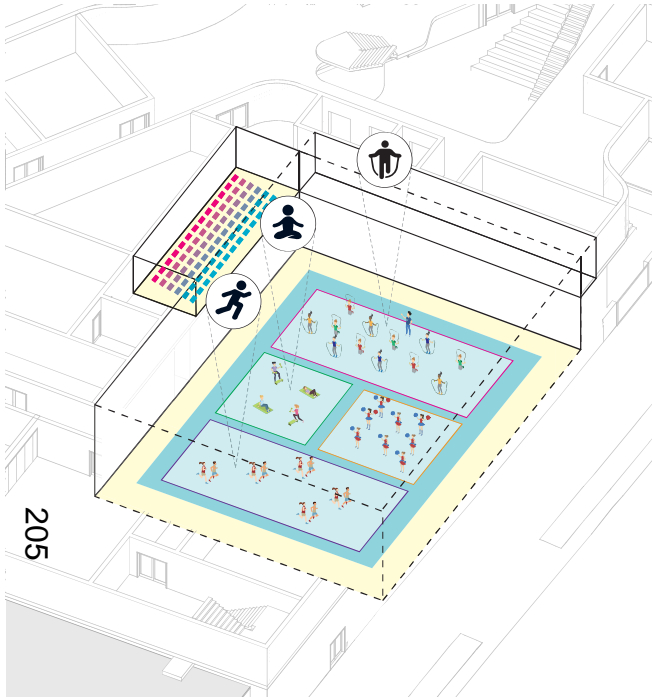
COMMUNITY / SHARED USE
Before & after school hours, weekends



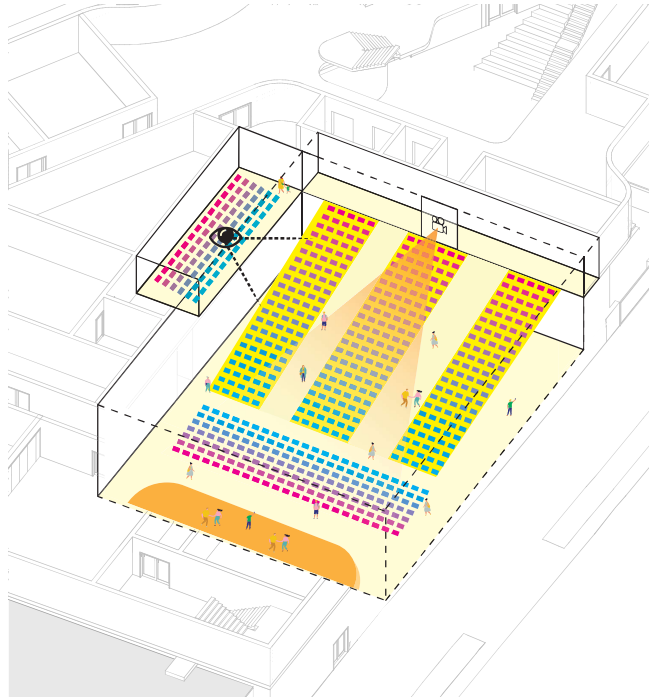
1. In the morning, people gather in the foyer space before going into the auditorium for the community gathering.
2. During the gathering, people intently listen to the various guest speakers.
3. After the various guest presentations, some people head to the flexible rooms on level 01 to have further community discussions.
4. People go back to the basement to pick up their car and drive to their next activity/destination.

PROGRAMMATIC OPERATIONS
AUDITORIUM MODES

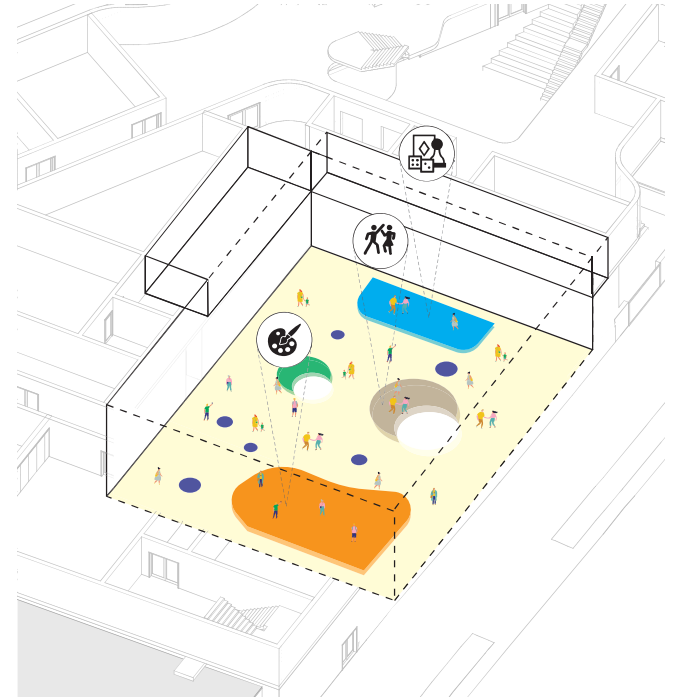
SPORT MODE



SEATING MODE



FLAT MODE



SCHOOL EXERCISE PROGRAM
COMMUNITY SPORT COMPETITION
WEEKEND YOGA CLASS
REGULAR SCHOOL HIRE

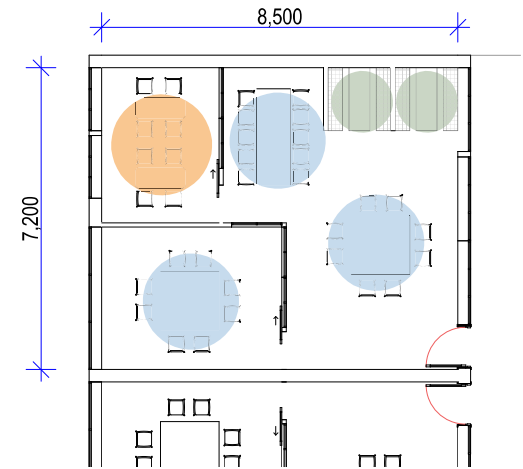
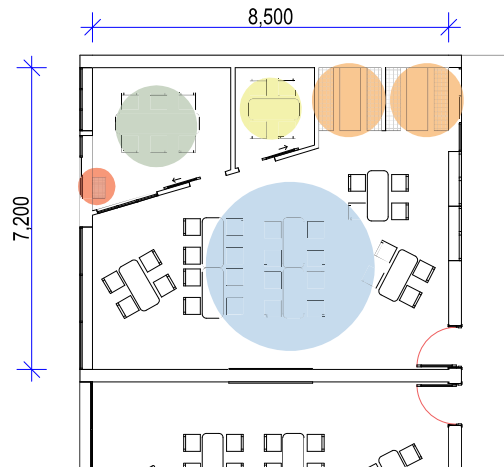
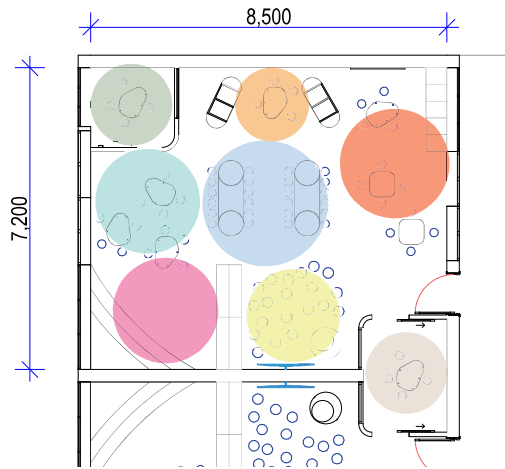


PERFORMANCE AND PLAYS
SCHOOL ASSEMBLY
COMMUNITY GATHERING
GUEST SPEAKER

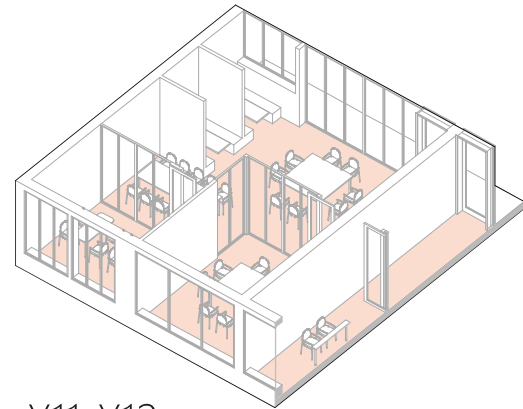
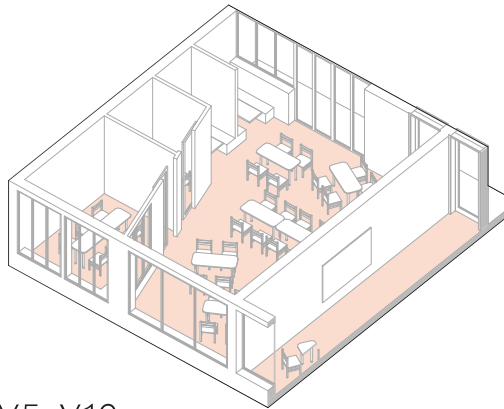
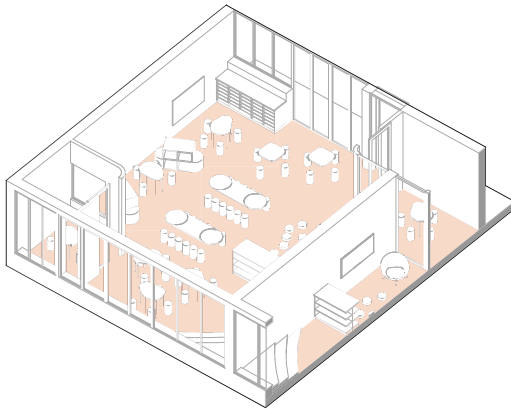


SCHOOL ART EXHIBITION
WEEKEND LOCAL MARKET
SCHOOL DISCO
FASHION HALL

FLEXIBLE CLASSROOM MODULES



206



K-Y4

- **SHARED READING HUB**
1 x WALL MOUNTED LCD
1 x MODULAR BOOK SHELF
- **READERS HUB**
PLATFORM SEATINGS
1 x MODULAR BOOK SHELF
- **READERS HUB**
TECH HUB STORAGE
1 x TABLE
- **CENTRALISE LEARNING SPACE**
24 x SEATS
2 x LONG TABLE
1 x MOBILE WHITE BOARD
- **WRITER SPACE**
12 x SEATS
3 x TABLE
- **SHARED BREAKOUT ROOM**
5 x SEATS
- **MATHS WALL**
1 x MATHS WALL
30 x TRAY STORAGE
- **ACCELERATED INTERVENTION**
1 x TEACHING STATION

Y5-Y10

- **BREAK OUT ROOM**
1 x TABLE
4 x CHAIRS
- **COLLABORATION BOOTH**
4 x STUDENT PER BOOTH WITH LCD
- **CENTRALISE LEARNING SPACE**
24 x SEATS
6 x LONG TABLE
1 x WALL MOUNTED WHITE BOARD
- **PEER REVIEW OBSERVATION**

Y11-Y12

- **COLLABORATION BOOTH**
4 x STUDENT PER BOOTH WITH LCD
- **WITHDRAWAL**
4 x STUDENT PER TABLE
2 x TABLE
- **ELECTIVE LEARNING SPACE**
26 x SEATS
3 x LARGE TABLE
- **PEER REVIEW OBSERVATION**